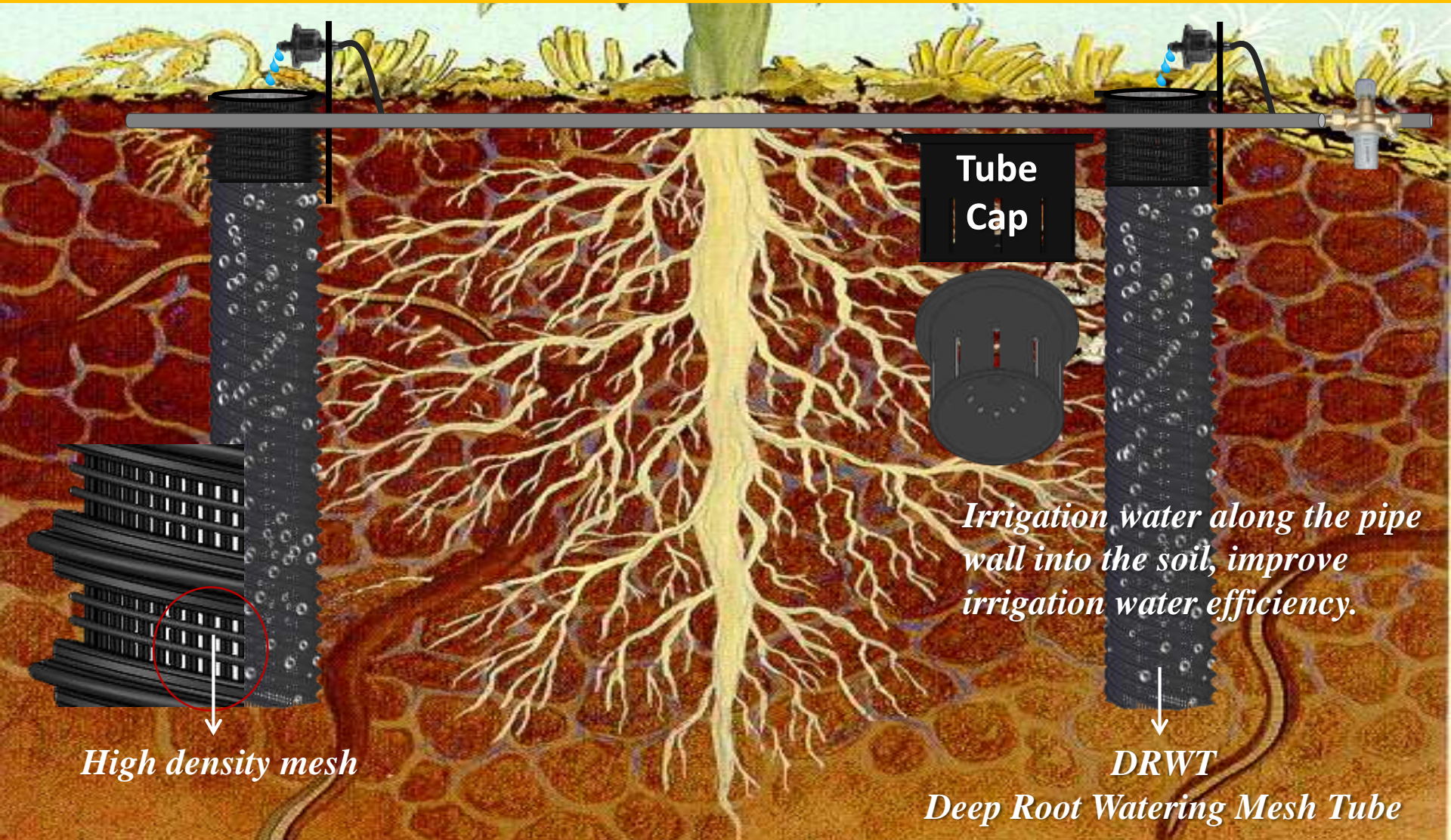




Root Aeration & Deep Root Tree Watering Systems

DRWT-Deep Root Watering Mesh Tube-Applications



DRWT - Deep Root Watering Mesh Tube enables vital water, oxygen, and nutrients to bypass compacted Soil and directly reach tree and shrub root zones to improve tree and shrub investment protection, Watering efficiency and landscape aesthetics through deep root growth and tree development.



Root Aeration & Deep Root Tree Watering Systems

DRWT-Deep Root Watering Tube – Transplant Applications

Install DRWT Mesh Tubes evenly spaced and positioned on the edge of root ball or root mass. The minimum of 2 to 4 Mesh Tubes per tree is recommended. The amount of DRWT Mesh Tube varies depending on the size of the tree and watering requirements.



Place Anti-Clog Mesh Tube units evenly around the root ball half way between the outside edge of the planting pit and the root ball. Prepare pit to specified guidelines.

Place the Mesh Tube in the ground so the soil is even with the lip ring at the top.

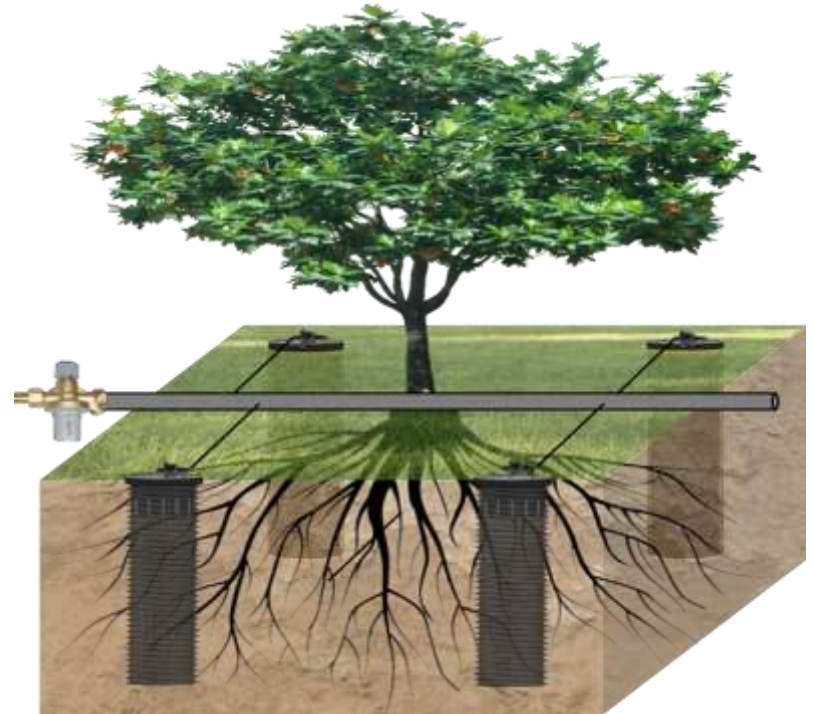
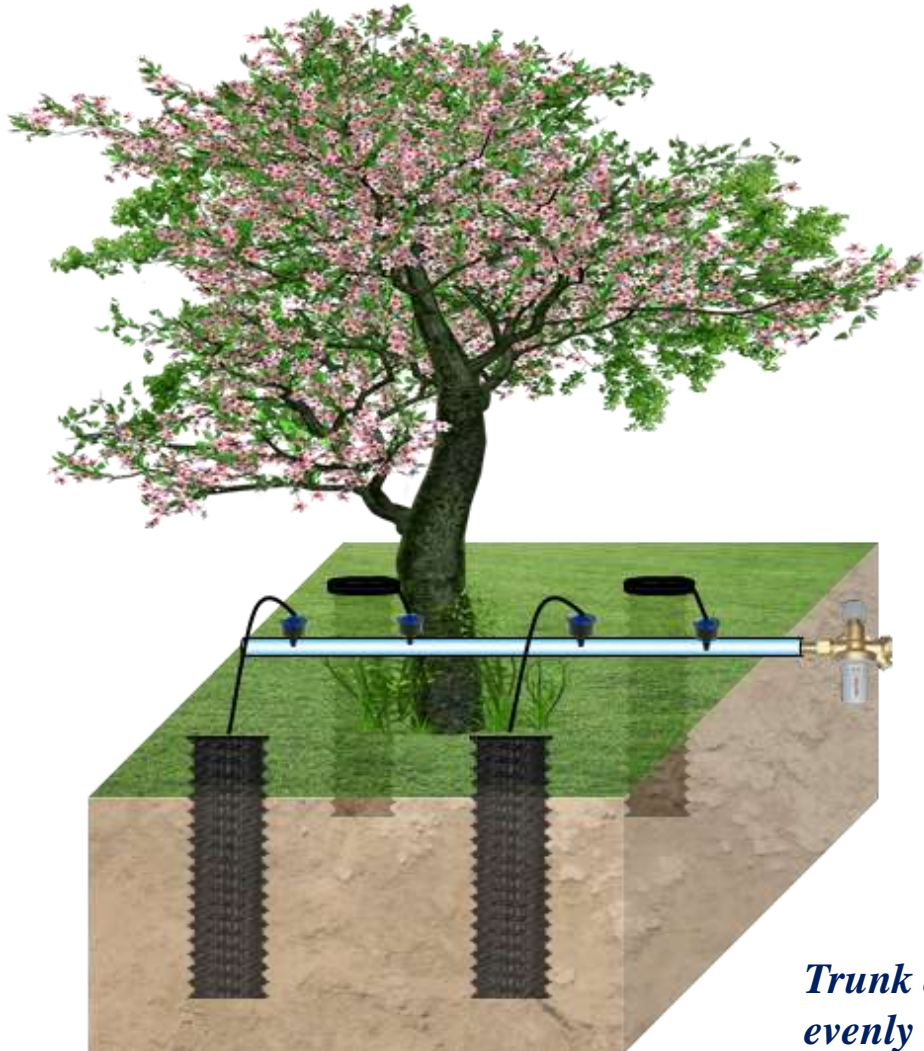


Remove as much shipping and containment materials from the root mass as possible.



Root Aeration & Deep Root Tree Watering Systems

DRWT-Deep Root Watering Tube – Existing Trees Underground Irrigation Applications



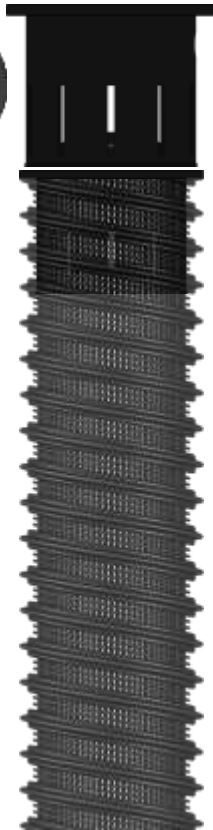
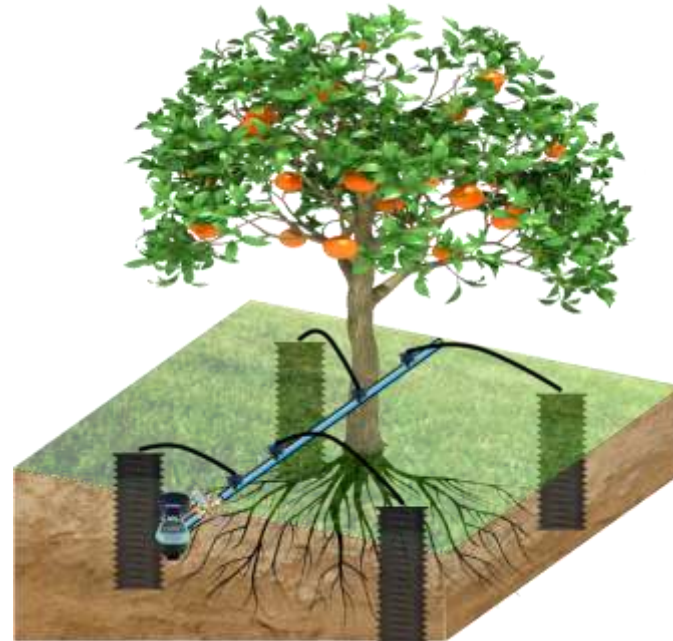
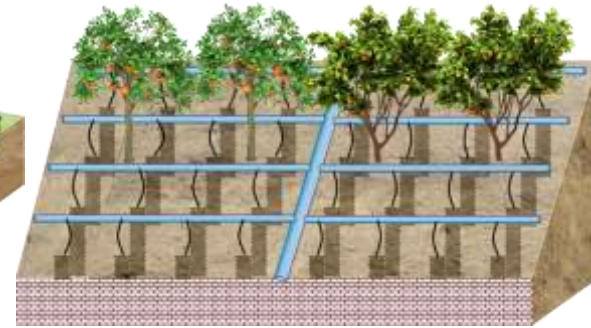
Trunk ϕ	Quantity
50mm	2
75mm	3
100mm	4
125mm	5
150mm	6

*Trunk diameter greater than 150mm, place 75cm~100cm evenly apart in a circular manner.
Tube cover flush with the ground, does not affect the mowing operation.*



Root Aeration & Deep Root Tree Watering Systems

DRWT-Deep Root Watering Tube – Hillside Tree Irrigation - Applications



Hillside trees, DRWT- Deep Root Watering Tube System, save water and fertilizer, increase production, high efficiency, soil does not slip, is the best material for planting irrigation on hillside.



Root Aeration & Deep Root Tree Watering Systems

DRWT-Deep Root Watering Tube – Potted Applications



Potted planting is recommended 1 ½" ϕ DRWT-Deep Root Watering Tube, with automatic drip irrigation system, saving water, fertilizer, ventilation, increase production, and high efficiency.



Root Aeration & Deep Root Tree Watering Systems

DRWT-Deep Root Watering Tube – Vineyards Applications



*Grape tree cultivation is recommended
2"φ x 18"
DRWT-Deep Root Watering Tube*



Root Aeration & Deep Root Tree Watering Systems

DRWT-Deep Root Watering Tube – Avocado & Pomelo Plants Applications

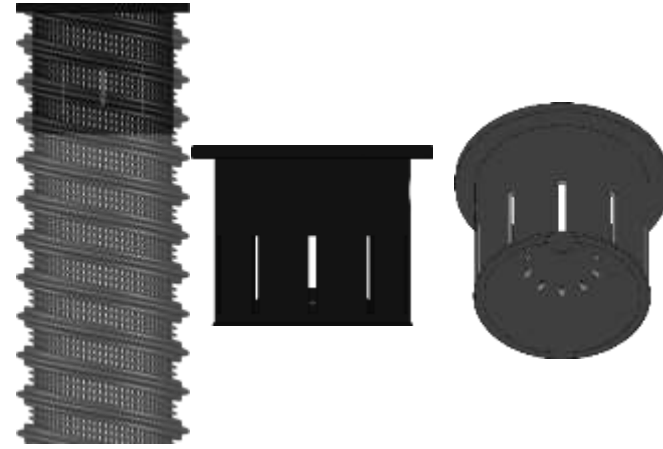
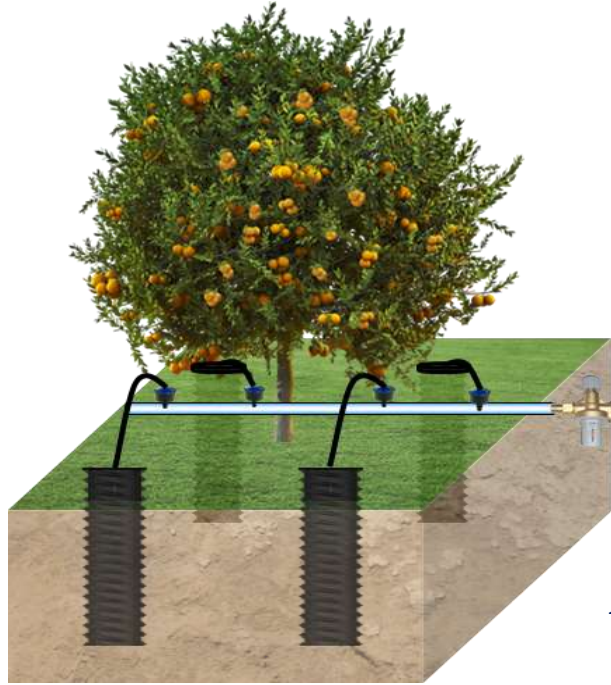


*Avocado & Pomelo cultivation is recommended
3"φ x 18"
DRWT-Deep Root Watering Tube*



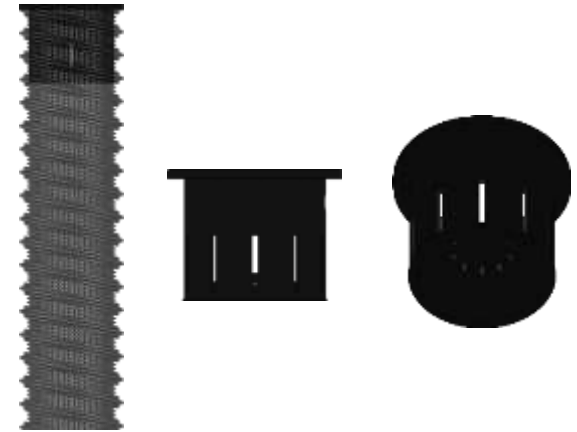
Root Aeration & Deep Root Tree Watering Systems

DRWT-Deep Root Watering Mesh Tube – Fruit Plants Growing Applications



*Large fruit planting is recommended
4"φ x 24"*

DRWT-Deep Root Watering Mesh Tube



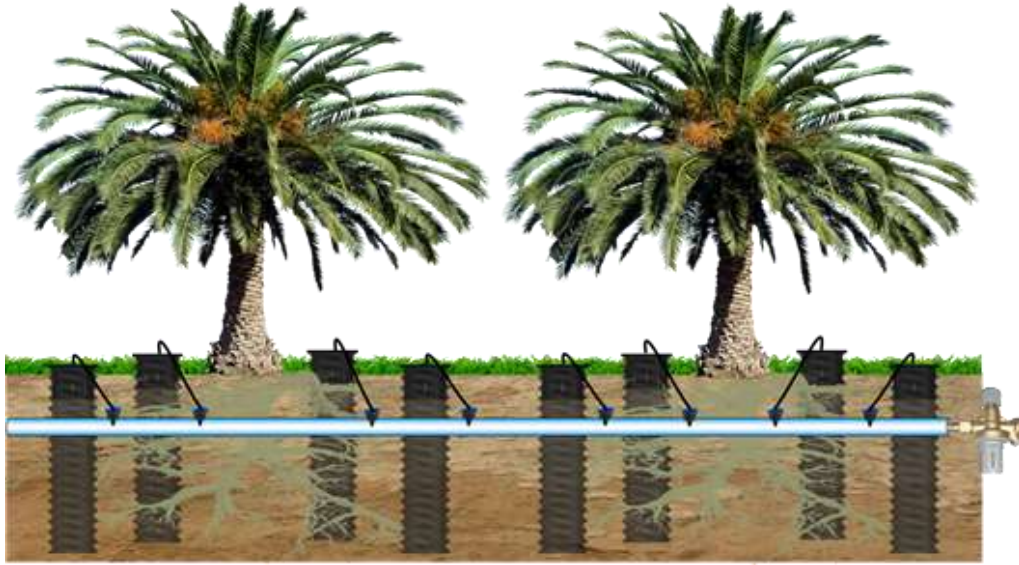
*Medium-sized fruit tree planting is recommended
3"φ x 18"*

DRWT-Deep Root Watering Mesh Tube



Root Aeration & Deep Root Tree Watering Systems

DRWT-Deep Root Watering Tube – Date Palm Tree Growing Applications

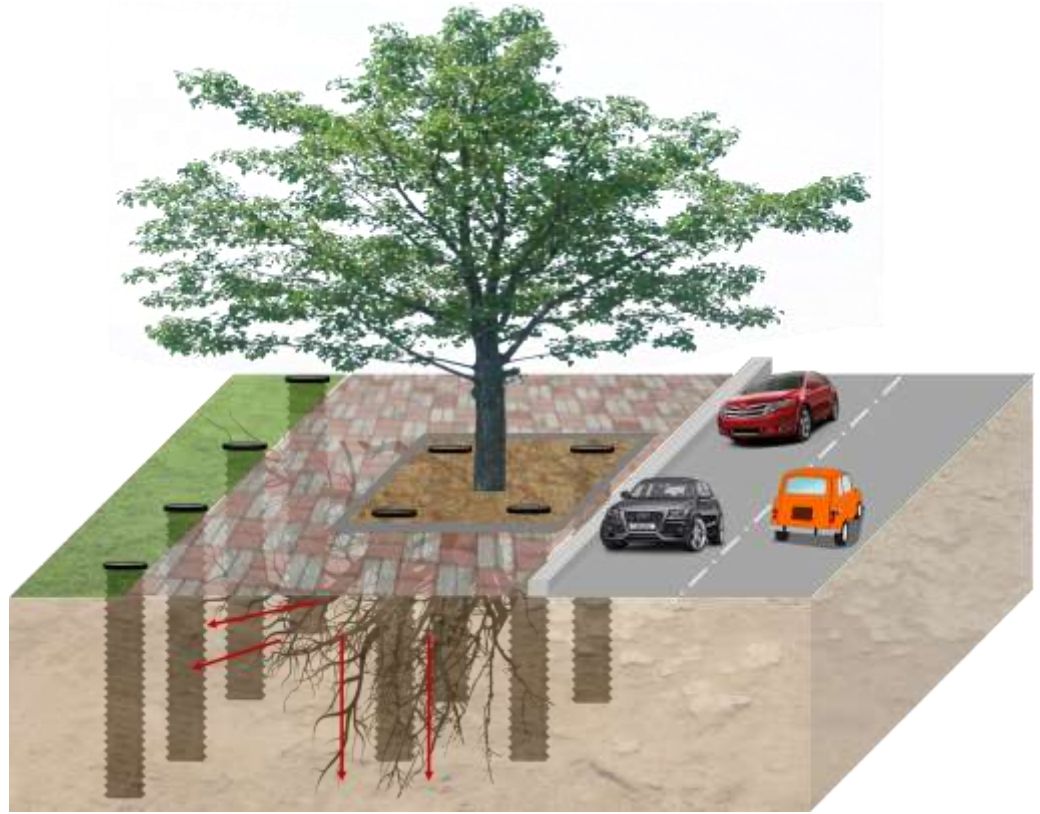


*Date palm cultivation is recommended
4"φ x 18"
DRWT-Deep Root Watering Tube*



Root Aeration & Deep Root Tree Watering Systems

DRWT-Deep Root Watering Tube – Street Tree Guide Tube Applications



DRWT-Deep Root Watering Tube is embedded around the trunk to guide the roots to grow downward. The green area is embedded with DRWT-Deep Root Watering Tube to guide the roots to the green area.

*Large tree planting is recommended
4"φx36"*

DRWT-Deep Root Watering Tube

*Medium-sized tree planting is recommended
3"φx24"*

DRWT-Deep Root Watering Tube

