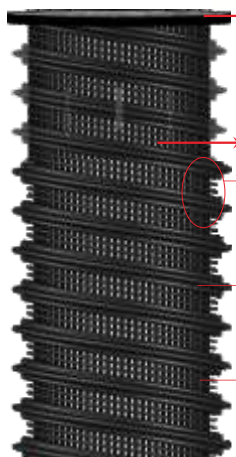
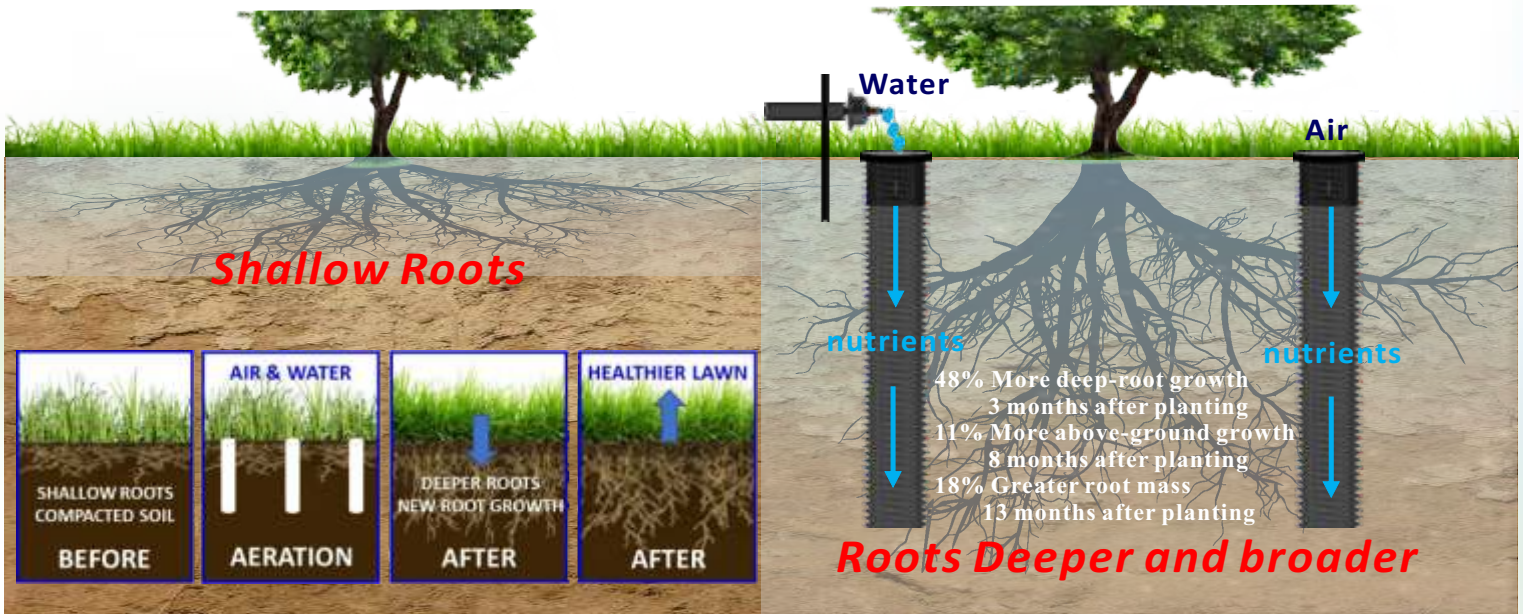


DRWT – Deep Root Watering Mesh Tube enables vital water, oxygen, and nutrients to bypass compacted soil and directly reach tree and shrub root systems to promotes tree and shrub investment protection, watering efficiency and landscape aesthetics through deep root growth and tree development.



Anti-Clog Deep Root Watering Tube Cap Features

- Mesh tube caps filled with gravel in order to filter surface water and anti-debris into the tube.
- Irrigation water along the sidewall into the soil.
- The tube caps are designed and constructed for simple maintenance and cost-effective.



DRWT - Deep Root Watering Mesh Tube

Mesh Tube sidewall is Anti-Clog and minimizes soil entry without extra filter material, such as non-woven fabric.

The sidewall has T-type thread and high compressive resistance.

The sidewall openings are fine mesh design to minimize soil entry.

DRWT - Deep Root Watering Tube Mesh Specifications

DRWT Size	Code	ID*OD ±3.0%mm	Gap ±3.0%mm	Length m	Cut Length cm
2"	MSO-50A	48.5*61	11.5mm	5m	25cm, 36cm, 46cm, 60cm
3"	MSO-75A	77*89	12.5mm	5m	36cm, 46cm, 60cm, 90cm, 120cm
4"	MSO-100A	98*114	12.5mm	5m	46cm, 60cm, 90cm, 120cm

HDPE/30% recycled materials

DRWT provides subsurface irrigation and aeration designed to prevent tree and shrub transplant shock. It allows the roots to grow deeper and broader resulting in greater tree stability, higher survival rates and long-term healthier growth. DRWT minimizes the total water volume required to irrigate trees, reducing water loss due to evaporation, wind and edge control losses.

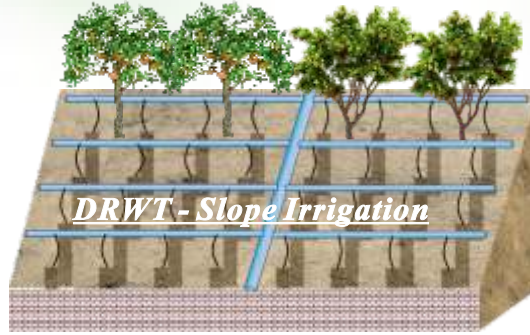


Root Aeration Tubes and Deep Root Tree Watering Systems *DRWT - Deep Root Watering Mesh Tube - Applications*

DRWT - Hillside Tree Subsurface Irrigation



DRWT - Slope Irrigation



DRWT - Slope Irrigation



DRWT - Hillside Irrigation



DRWT - Vineyard Cultivation



DRWT - Street Tree Roots Guide



DRWT - Dates Palm Irrigation



DRWT - Avocado Trees Cultivation



DRWT - Potted Irrigation



DRWT - Pomelo Trees Cultivation



*DRWT
Fruit Trees
Slope Cultivation*



*Tube
Cap*

*Tube
Cap*

DRWT

*DRWT - Tube cap design of irrigation water to seep into the soil along the inner edge of the tube, improve the efficiency of irrigation water.
DRWT - Deep root watering and aeration ensures tree health and promotes accelerated growth.
DRWT - Minimizes the total water volume required to irrigate trees and reduces water loss due to evaporation, wind and edge control losses.*