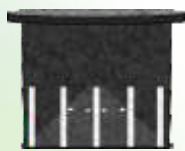
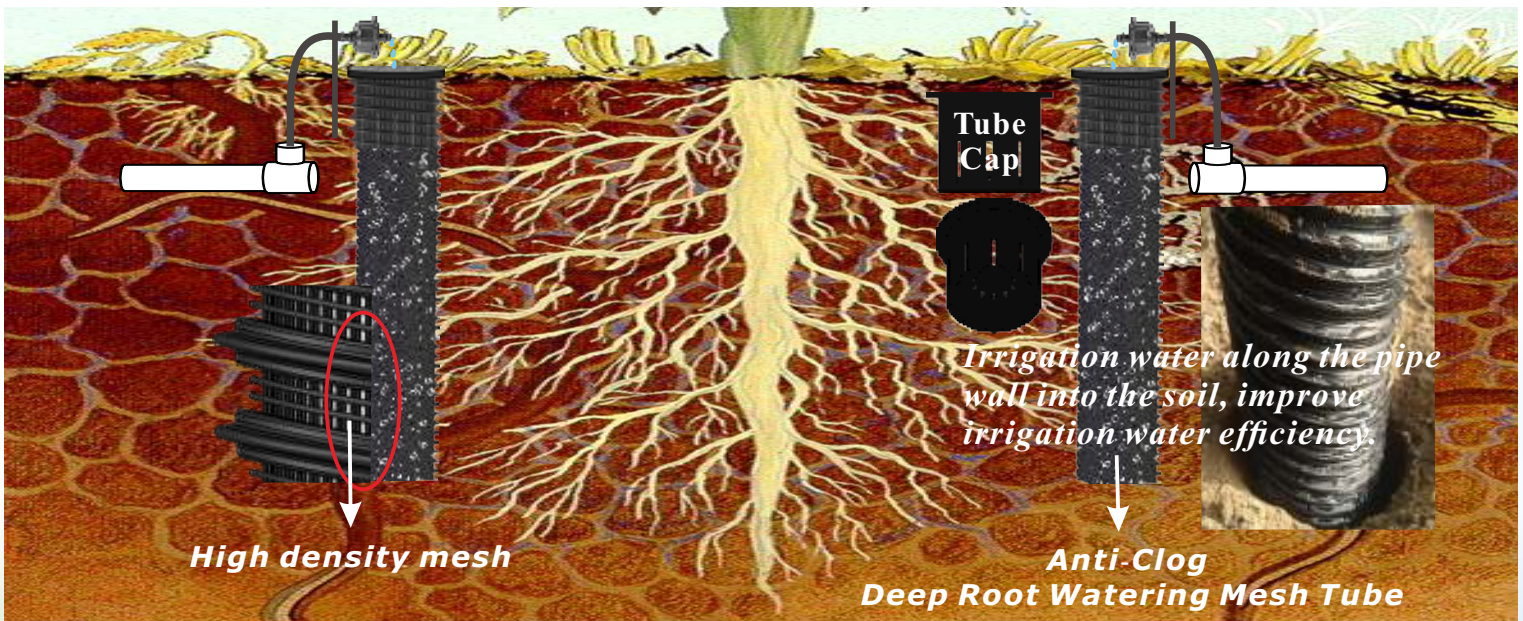




ECO-MESH

Root Aeration Tubes and Deep Root Tree Watering Systems DRWT - Deep Root Watering Mesh Tube



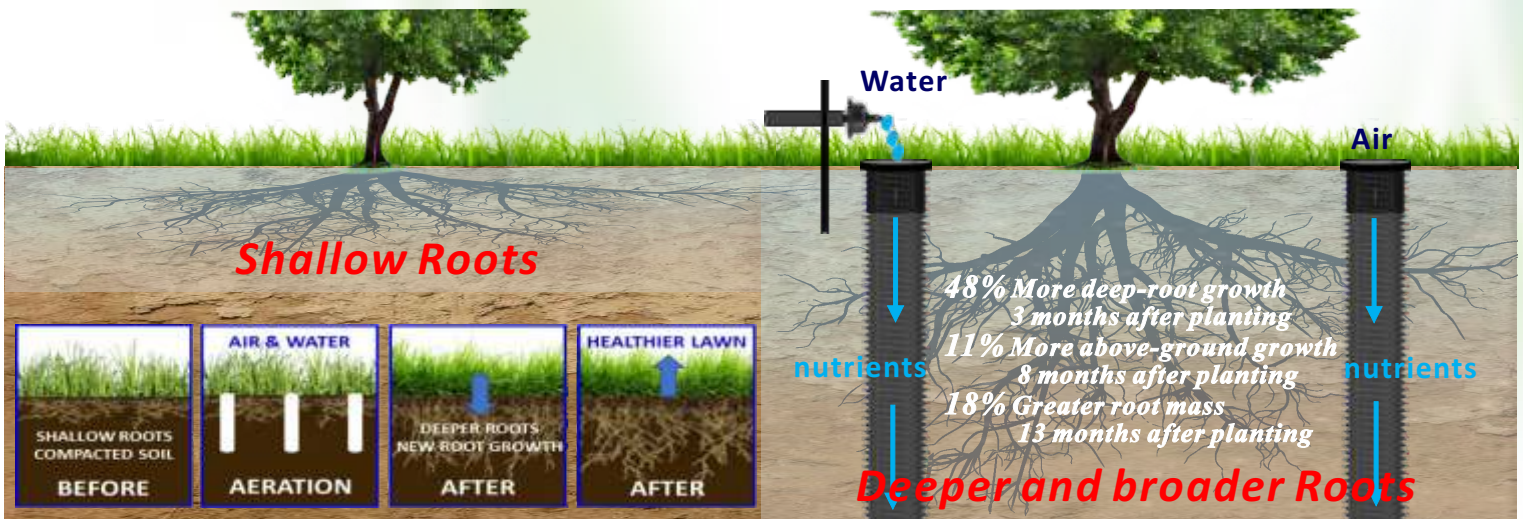
DRWT - Deep Root Watering Mesh Tube Cap Features

- * Mesh tube caps filled with gravel in order to filter surface water and anti-debris into the tube.
- * Irrigation water along the sidewall into the soil.
- * The tube caps are designed and constructed for simple maintenance and cost-effective.

→ The sidewall openings are high-density mesh design to minimize soil entry.

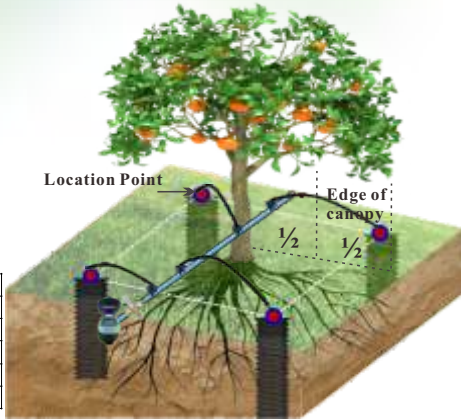
→ The sidewall has T-type thread and high compressive resistance.

→ Mesh Tube sidewall is Anti-Clog and minimizes soil entry without extra filter material, such as non-woven fabric.



DRWT – Deep Root Watering Mesh Tube enables vital water, oxygen, and nutrients to bypass compacted soil and directly reach tree and shrub root systems to promote tree and shrub investment protection, watering efficiency and landscape aesthetics through deep root growth and tree development.

DRWT-Installation Guide for Existing Trees



Trunk	Quantity
50mm	2
75mm	3
100mm	4
125mm	5
150mm	6

Trunk greater than 150mm: place 90cm~100cm evenly apart around the trunk.

DRWT-Installation Guide for Transplanted Trees



Place Anti-Clog Mesh Tube units evenly around the root ball half way between the outside edge of the planting pit and the root ball.

Place the Mesh Tube in the ground so the soil is even with the lip ring at the top.

Remove as much shipping and containment materials from the root mass as possible.

Install DRWT evenly spaced and positioned on the edge of root ball or root mass. The minimum of 2 to 4 DRWT per tree is recommended. The amount of DRWT varies depending on the size of the tree and watering requirements.

DRWT - Hillside Tree Subsurface Irrigation



DRWT - Slope Irrigation



DRWT - Vineyard Cultivation



DRWT Avocado Tree Cultivation



DRWT - Street Tree Roots Guide



DRWT - Dates Palm Irrigation



DRWT Pomelo Tree Cultivation



DRWT - Potted Irrigation

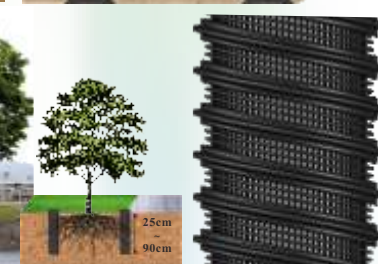
DRWT-Deep Root Watering Tube (MSO)-Specifications

DRWT Size	Code	ID*OD ±3.0%mm	Gap ±3.0%mm	Length m	Cut Length cm
2"	MSO-50A	48.5*61	11.5mm	5m	25cm, 36cm, 46cm, 60cm
3"	MSO-75A	77*89	12.5mm	5m	36cm, 46cm, 60cm, 90cm, 120cm
4"	MSO-100A	98*114	12.5mm	5m	46cm, 60cm, 90cm, 120cm

* Provide length cutting service



The same period of planted beech, after 10years, The size of the trees showing amazing difference.



ECO-MESH Inc.

No. 63, Ln. 45, Xinyi Rd., Chiayi City, Taiwan
 Tel : 886-5-2350019 Fax : 886-5-2843119
<https://ecomeshlife.com>
 Email : info@eco-mesh.com



SPECIALIZE IN EXTRUDED NETTING AND MESH PIPE